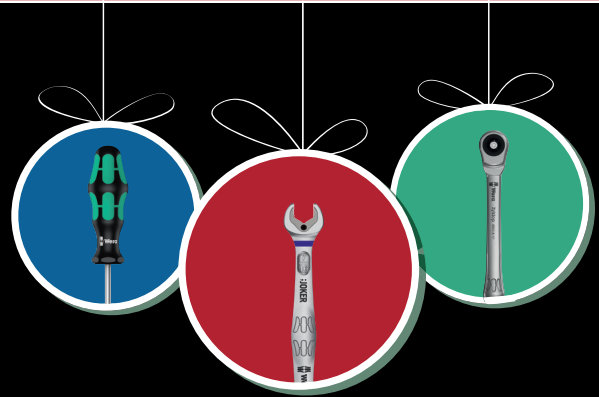


Promotion valid from October 1st to December 31st, 2019



# Stocking Stuffer Time!



## Kraftform Kompakt VDE 60 i/7



- Multi-component VDE Kraftform handle with anti-roll feature.
- VDE 154 mm long interchangeable blades.
- Individually tested in waterbath to ensure safe working at 1,000 volts.
- Includes strong durable case compatible with Wera 2go.



Part# 05003473001 | Reg. \$67.92

**SALE \$34.99**

## Kraftform Kompakt VDE 18-piece set with Interchangeable Blades.



- Multi-component VDE Kraftform handle with anti-roll feature.
- VDE 154 mm long interchangeable blades.
- Individually tested in waterbath to ensure safe working at 1,000 volts.
- Includes strong durable case compatible with Wera 2go.



Part# 05347108001 | Reg. \$135.32

**SALE \$69.99**



## Tool-Check PLUS

- Convenient direction change thanks to switchover lever.
- Fine-pitched ratchet mechanism and small return angle of 6 degrees.
- Very robust.
- Quick-release chuck with Rapidaptor technology.
- "Take it easy" Tool Finder with colour coding according to sizes.



Part# 05056490001 (Metric) | Reg. \$162.00

**SALE \$82.99**

Part# 05056491001 (SAE) | Reg. \$162.00

**SALE \$82.99**



Distributed by:



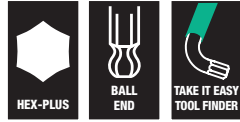
weratools.com





## 950 SPKL/9 Multicolour Long Arm Hex Key Set

- L-keys for hexagonal screws.
- Hex-Plus allows socket head screws to live longer.
- L-keys are quickly to hand thanks to their size markings.
- Wear-resistant size markings.
- "Take it easy" Tool Finder: Colour coding according to profile and size.



Part# 05022089001 (Metric)	Reg. \$69.60	1,5,2,2,5,3,4,5,6,8,10	<b>SALE \$34.99</b>
Part# 05022639001 (SAE)	Reg. \$69.60	5/64,3/32,1/8,5/32 3/16,7/32,1/4,5/16,3/8	<b>SALE \$34.99</b>



## Kraftform Kompakt 25/26 with Pouch



- Retractable bayonet blade.
- Integrated magazine for bit storage.
- Tough viscous bits for universal use.
- In robust pouch.
- Ergonomic Kraftform handle for low-fatigue working.



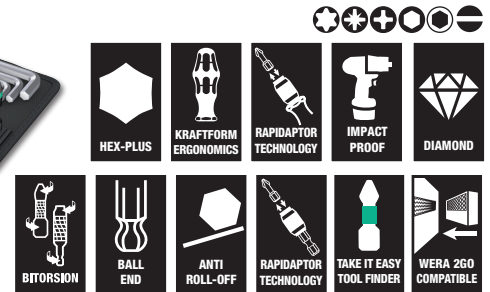
KK25

KK26

Part# 05051024001 (KK25)	Reg. \$72.37	<b>SALE \$36.99</b>
Part# 05051025001 (KK26)	Reg. \$72.37	<b>SALE \$36.99</b>

## Kraftform Kompakt 100 52-piece Set with Bitholding Screwdriver

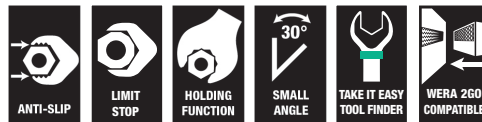
- Robust surface-protecting, compact, textile box.
- Rapidaptor technology for rapid bit change.
- BiTorsion bits in a length of 25mm for long service life.
- Impaktor bits in a length of 50 mm for particularly demanding jobs.
- L-keys with Hex-Plus profile (prevents the rounding of hexagon socket screws).



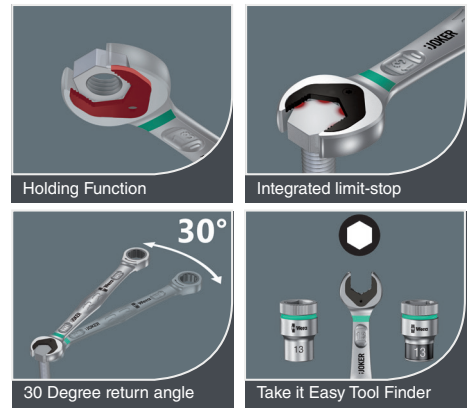
Part# 05057460001	Reg. \$184.20	<b>SALE \$89.99</b>
-------------------	---------------	---------------------

## Joker 4-Piece Ratcheting Combination Wrench Set

- Practical holding function thanks to the metal plate in the jaw.
- Limit stop prevents any slipping.
- The double-hex geometry reduces the risk of slipping.
- Return angle of only 30 degrees.
- "Take it easy" Tool Finder with colour coding according to sizes.



Part# 05073290001 (Metric)	Reg. \$161.21	<b>SALE \$79.99</b>
Part# 05073295001 (SAE)	Reg. \$161.21	<b>SALE \$79.99</b>



Get information on Wera Tools promotions, product releases and industry news.

