

Dynamic

Tools That Make Your Job Easier

Offer expires: April 30th, 2021

New! Dynamic Toolboxes with Safety Latches



Winter Promotion

New!
53" Roller Cabinet
with Safety Latches

New!
71" Roller Cabinet
with Safety Latches



See pages 4-5 for details.

Mirror chrome finish for excellent corrosion resistance and easy clean-up

Knurl for improved grip (except 1/4" drive)



Laser etched markings improve identification and provide SAE/Metric differentiation



\$327.99

D106001

89 Piece 1/4", 3/8" & 1/2" Drive Socket Set

- 1/4" Drive:**
- 6 Point Standard SAE Sockets: 5/32", 3/16", 7/32", 1/4", 9/32", 5/16", 11/32", 3/8", 7/16", 1/2"
 - 6 Point Standard Metric Sockets: 4, 4.5, 5, 5.5, 6, 7, 8, 9, 10, 11, 12, 13 mm
 - 6 Point Deep SAE Sockets: 3/16", 1/4", 9/32", 5/16"
 - 12 Point SAE Sockets: 3/16", 7/32", 1/4", 9/32", 5/16", 11/32", 3/8", 7/16", 1/2"
- 3/8" Drive:**
- 6 Point SAE Sockets: 3/8", 7/16", 1/2", 9/16", 5/8", 11/16", 3/4", 13/16"
 - 6 Point Metric Sockets: 9, 10, 11, 12, 13, 14, 15, 17, 19 mm
 - 12 Point SAE Sockets: 3/8", 7/16", 1/2", 9/16", 5/8", 11/16", 3/4", 13/16"
 - 12 Point Metric Sockets: 9, 10, 11, 12, 13, 14, 15, 16, 17, 19 mm
 - 12 Point Deep SAE Sockets: 3/8", 7/16", 1/2", 9/16"
- 1/2" Drive:**
- 12 Point Standard SAE Sockets: 1/2", 9/16", 5/8", 11/16", 3/4", 13/16", 7/8"
- Chrome Ratchets:** 1/4", 3/8", 1/2" Drive
- 2 Spark Plug Sockets 3/8" Drive: 5/8", 13/16"**
- Extensions:**
- 1/4" Drive 4", 3/8" Drive 3" & 1/2" Drive 5"
- List Price: **\$498.52**



D004008
9 Piece 12 Point Standard Metric Socket Set
 • 4-12 mm
 List Price: **\$31.98**
\$21.99



D004009
8 Piece Standard Length Torx® Socket Set
 • T8-T30
 List Price: **\$38.90**
\$25.99



D010002
13 Piece 12 Point Standard SAE Socket Set
 • 1/4"-1"
 List Price: **\$69.80**
\$45.99



D010006
14 Piece 12 Point Standard Metric Socket Set
 • 6-19 mm
 List Price: **\$58.49**
\$38.99



D010018
9 Piece Standard Length Torx® Socket Set
 • T15-T55
 List Price: **\$55.08**
\$36.99



D010019
9 Piece Long Torx® Socket Set
 • T15-T55
 List Price: **\$67.59**
\$44.99

D010008
16 Piece 6 Point Standard SAE Socket Set
 • SAE Std: 3/8" -1"
 • 3", 6" Extensions
 • 8" Flex Handle
 • U-Joint, 45 Tooth Ratchet
 List Price: **\$194.20**
\$127.99



D010023
12 Piece 6 Point Deep Metric Impact Socket Set
 • 8-19 mm
 List Price: **\$96.48**
\$63.99



D010010
20 Piece 6 Point Standard Metric Socket Set
 • Metric Standard: 6-20 mm
 • 3", 6" Extensions
 • 8" Flex Handle
 • U-Joint
 • 45 Tooth Ratchet
 List Price: **\$181.69**
\$119.99



Dynamic Sockets

- Laser etched markings improve size identification and provide SAE/Metric differentiation.
- Chrome sockets feature a knurl for improved grip (3/8" and 1/2" drive only).
- All sockets meet ANSI standards and are backed by a Limited Lifetime Warranty.



D018024
19 Piece 6 Point Standard Impact SAE Socket Set
 • 3/8"-1 1/2"
 List Price: \$201.51
\$132.99



D018026
19 Piece 6 Point Deep Impact SAE Socket Set
 • 3/8"-1 1/2"
 List Price: \$282.21
\$185.99



D018014
7 Piece Metric Standard Hex Socket Set
 • 6-19 mm
 List Price: \$65.54
\$43.99



D018015
7 Piece Metric Long Hex Socket Set
 • 6-19 mm
 List Price: \$81.90
\$53.99



D018004
19 Piece 6 Point Standard Metric Socket Set
 • 10-28 mm
 List Price: \$156.43
\$102.99



D023001
20 Piece, 12 Point Standard Metric Set
 • 19-36 mm
 • 4", 8", 16" Extensions
 • Flex Handle, 24 Tooth Ratchet
 List Price: \$637.99
\$419.99



D021001
10 Piece 6 Point Deep SAE Impact Socket Set
 • 15/16"-1 5/8"
 List Price: \$374.55
\$246.99



D021000
10 Piece 6 Point Standard SAE Impact Socket Set
 • 15/16"-1-5/8"
 List Price: \$263.57
\$173.99



D023000
21 Piece 12 Point Standard SAE Set
 • 7/8"-2"
 • 4", 8", 16" Extensions
 • Flex Handle
 • 24 Tooth Ratchet
 List Price: \$644.56
\$423.99



D027001
1" Drive 21 Piece 12 Point Standard SAE Set
 • 1 7/16"-3 1/8"
 • 8", 16" Extensions
 • 24 Tooth Reversible Ratchet
 • Sliding T-Head
 List Price: \$1,419.54
\$932.99



D069307
36" Roller Cabinet
- 8 Drawers - Safety Latches
 • Capacity: 9,821 cubic in.
 • Load capacity per drawer (top 2) is 66 lbs
 • Load capacity per drawer (bottom 6) is 88 lbs
 • Net weight: 195 lbs
 • 36" (w) x 18" (d) x 39 1/4" (h) (overall with casters)
 List Price: \$ 1,387.57

\$851.99



D069305
16" Side Rider
- 6 Drawers - Safety Latches
 • Capacity: 4,170 cubic in.
 • Load capacity per drawer is 66 lbs
 • Net weight: 77 lbs
 • 18" (w) x 18" (d) x 33-3/4" (h)
 List Price: \$568.50

\$348.99



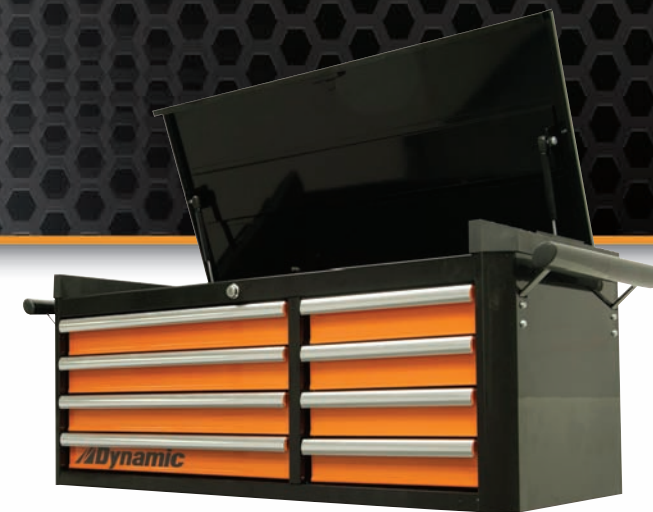
D069302
28" Top Chest
- 8 Drawers - Safety Latches
 • Capacity: 5,876 cubic in.
 • Load capacity per drawer is 66 lbs
 • Net weight: 99 lbs
 • 28" (w) x 18" (d) x 20" (h)
 List Price: \$799.99

\$489.99



D069308
28" Top Chest
- 9 Drawers - Safety Latches
 • Capacity: 4,942 cubic in.
 • Load capacity per drawer is 66 lbs
 • Net weight: 103 lbs
 • 28" (w) x 18" (d) x 20" (h)
 List Price: \$868.67

\$532.99



D069304
42" Top Chest
- 8 Drawers - Safety Latches
 • Capacity: 7,831 cubic in.
 • Load capacity per drawer is 88 lbs
 • Net weight: 129 lbs
 • 42" (w) x 18" (d) x 18" (h)
 List Price: \$973.82

\$597.99

New!



D069311
53" Roller Cabinet
- 12 Drawers - Safety Latches
 • Capacity: 19,612 cubic in.
 • Load capacity per drawer is 132 lbs
 • Net weight: 470 lbs
 • 53" (w) x 24" (d) x 41" (h) (overall with casters)
 List Price: \$2,969.78

\$1,821.99



Back view D069210



Dynamic Toolboxes* now feature a safety latch system that offers added protection against accidental drawer opening.

**Excludes part number D069210.*

New!



D069313
71" Roller Cabinet
- 17 Drawers - Safety Latches
 • Capacity: 26,432 cubic in.
 • Load capacity per drawer is 132 lbs
 • Net weight: 560 lbs
 • 71" (w) x 24" (d) x 41" (h) (overall with casters)
 List Price: \$3,990.54

\$2,447.99



D069210
45" Industrial Cart - 10 Drawers
 • Capacity: 15,742 cubic in.
 • Ideal work and storage station featuring 10 lockable drawers and slide down compartment
 • PVC top included
 • Peg wall for mounting accessories using hooks
 • Net weight: 310 lbs
 • 45" (w) x 29" (d) x 40" (h) (overall with casters)
 List Price: \$1,978.36

\$1,213.99



D069301
28" Roller Cabinet
- 7 Drawers - Safety Latches
 • Capacity: 8,881 cubic in.
 • Load capacity per drawer (top 5) is 66 lbs
 • Load capacity per drawer (bottom 2) is 88 lbs
 • Net weight: 129 lbs
 • 28" (w) x 18" (d) x 40" (h) (overall with casters)
 List Price: \$953.06

\$584.99



D069306
28" Roller Cabinet
- 10 Drawers - Safety Latches
 • Capacity: 10,845 cubic in.
 • Load capacity per drawer (top 8) is 66 lbs
 • Load capacity per drawer (bottom 2) is 88 lbs
 • Net weight: 163 lbs
 • 28" (w) x 18" (d) x 43 1/4" (h) (overall with casters)
 List Price: \$1,155.93

\$708.99



D069303
42" Roller Cabinet
- 12 Drawers - Safety Latches
 • Capacity: 13,378 cubic in.
 • Load capacity per drawer is 88 lbs
 • Net weight: 220 lbs
 • 42" (w) x 18" (d) x 41" (h) (overall with casters)
 List Price: \$1,579.27

\$968.99

Dynamic Wrenches

- Wide selection of combination and ratcheting wrench sets.
- Laser etched markings on combination wrenches improve size identification and provide SAE/Metric differentiation.
- Offset box end on most styles provides extra clearance.
- All wrenches* meet ANSI standards and are backed by a Limited Lifetime Warranty.

*torque wrenches have a 1 year limited warranty.



Torque Wrenches

	Square Drive	Capacity		Increments		Head Style	N° of teeth	Length	List Price
		Imperial	Nm	Imperial	Nm				
D086000	1/4"	30-150 in. lb.	4-16.4 Nm	1(in. lb)	0.11	Fixed	64	8"	\$147.54 \$105.99
D086002	1/2"	30-250 ft. lb.	48-332 Nm	1(ft. lb)	1.4	Fixed	32	24"	\$333.72 \$238.99
D086003	3/4"	100-600 ft. lb.	170-780 Nm	5(ft. lb)	6.8	Fixed	24	49"	\$1,147.45 \$819.99
D086201	3/8"	10-80 ft. lb.	17-105 Nm	0.5(ft. lb)	0.7	Flexible	32	19"	\$281.49 \$201.99
D086202	1/2"	30-250 ft. lb.	48-332 Nm	1(ft. lb)	1.4	Flexible	32	25"	\$333.72 \$238.99

- Each torque wrench is factory calibrated within tolerance limits of +4% clockwise
- Factory certificate of calibration included
- Quick release mechanism makes socket removal easy

- Lock ring prevents accidental change of torque setting
- Durable aluminum handle features an easy to grip diamond knurl surface
- Dual scale SAE/Metric
- Blow molded plastic case for convenient storage



D074201
14 Piece SAE Combination Wrench Set
 • 3/8"-1 1/4"
 List Price: ~~\$286.15~~ **\$188.99**



D074203
19 Piece Metric Combination Wrench Set
 • 6-24 mm
 List Price: ~~\$259.64~~ **\$170.99**



Adjustable Wrenches

	Length	List Price	
D072004	4"	\$16.37	\$10.99
D072006	6"	\$17.44	\$11.99
D072008	8"	\$23.09	\$15.99
D072010	10"	\$29.90	\$19.99
D072012	12"	\$41.33	\$27.99
D072015	15"	\$65.77	\$43.99
D072018	18"	\$113.28	\$74.99

5 Piece Double Box End Reversible Ratcheting Wrench Set (25° Offset)



	Size Range	List Price	
D081201 SAE	1/4" x 5/16" - 3/4"x7/8"	\$84.10	\$55.99
D081202 Metric	7x8mm - 15x17mm	\$79.36	\$52.99

5 Piece Double Box End Reversible Ratcheting Wrench Set (Straight)

	Size Range	List Price	
D081203 SAE	1/4" x 5/16" - 3/4"x7/8"	\$82.63	\$54.99
D081204 Metric	7x8mm - 15x17mm	\$78.42	\$51.99





D055210
4 Piece Pliers Set
- Insulated Handles

- 8" Linesman Pliers-Insulated
- 8" Diagonal Cutting Pliers-Insulated
- 8" Long Nose Pliers-Insulated
- 10" Box Joint Water Pump Pliers-Insulated

List Price: **\$168.33**

\$110.99



D055205
3 Piece Aviation Snips Set

- Cuts straight, left & right

List Price: **\$78.97**

\$51.99

D055530
3 Piece High Leverage Pliers Set

- Unique pivot joint design reduces effort required to make cuts versus ordinary plier
- Unique tapered handle design allows for increased cutting power
- 8" Linesman Pliers
- 7" Diagonal Cutting Pliers
- 8" Long Nose Pliers

List Price: **\$90.91**

\$59.99



D055416
6 Piece Joint Welding Pliers Set

- 8" flap lap joints locking pliers
- 9" flanged, lapped & adjacent joints locking pliers
- 8" adjacent joints locking pliers
- 8" flanged lap joints locking pliers
- 7" lap joints locking pliers
- 7" 90 angle joints locking pliers

List Price: **\$264.49**

\$188.99



Bolt Cutters

	Length	Cutting Capacity Soft HRC15	Medium HRC31	List Price	
D091001	14"	9/32"	7/32"	\$48.06	\$31.99
D091002	18"	5/16"	1/4"	\$57.81	\$37.99
D091003	24"	3/8"	5/16"	\$82.11	\$53.99
D091004	30"	1/2"	3/8"	\$108.03	\$70.99
D091005	36"	11/16"	7/16"	\$139.01	\$91.99



Wonder Bars (Nail Puller)

Wrecking Bars

	Overall Length	Weight (lbs)	List Price	
D056312	12"	0.83	\$12.37	\$8.99
D056318	18"	1.93	\$13.72	\$9.99
D056324	24"	3.25	\$22.89	\$16.99
D056330	30"	3.95	\$25.62	\$18.99
D056336	36"	4.68	\$30.93	\$22.99
D056342	42"	5.51	\$34.22	\$24.99

	Overall Length	Weight (lbs)	List Price	
D056113	13"	1.19	\$13.18	\$9.99
D056118	18"	1.56	\$16.00	\$11.99

Dynamic Hammers

- Hammers are offered in a choice of fiberglass or hickory handles.
- A variety of styles for any job requirements.
- All hammers meet ANSI standards and are covered by a Limited Lifetime Warranty.



D041010
16 oz Claw Hammer - Hickory Handle
 List Price: ~~\$28.26~~

\$20.99



D041011
16 oz Claw Hammer - Fiberglass Handle
 List Price: ~~\$28.26~~

\$20.99



D041110
25 oz Framing Hammer - Hickory Handle
 List Price: ~~\$52.71~~

\$37.99



D041027

Ball Pein Hammers - Hickory Handle

	Head Weight	List Price	
D041025	8 oz.	\$24.76	\$17.99
D041027	16 oz.	\$28.26	\$20.99
D041028	24 oz.	\$35.32	\$25.99
D041029	32 oz.	\$38.89	\$27.99



D041130
24 oz Bricklayer's Hammer - Hickory Handle
 List Price: ~~\$30.59~~

\$20.99



D041000

Rubber Mallets - Hickory Handle

	Head Weight	List Price	
D041000	1 lb	\$10.63	\$6.99
D041001	1.5 lb	\$16.34	\$11.99



D058203
16 Piece Punch and Chisel Set

- Cold Chisels: 5/16", 1/2", 5/8", 3/4", 7/8"
- Centre Punches: 1/8", 5/32", 1/4"
- Solid Punches: 1/8", 3/16", 1/4"
- Drift Punches: 3/16", 1/4"
- Pin Punches: 1/8", 3/16", 1/4"
- Storage pouch included

List Price: ~~\$185.19~~

\$121.99



New!

D112000
3 Piece 1/4" Hex Socket Driver Adapter Set

- 1/4", 3/8" & 1/2" Drive
- Ideal for use with any powered straight drill to drive sockets
- Made of robust chrome vanadium steel for maximum durability
- Spring loaded ball keeps socket secure on adapter

List Price: ~~\$13.32~~

\$8.99

New!

D043212
22 Piece SAE and Metric Ball End Long Hex Key Set

- SAE: 3/64", 1/16", 5/64", 3/32", 7/64", 1/8", 9/64", 5/32", 3/16", 7/32", 1/4", 5/16", 3/8"
- Metric: 1.5, 2, 2.5, 3, 4, 5, 6, 8, 10mm

List Price: ~~\$46.05~~

\$30.99

